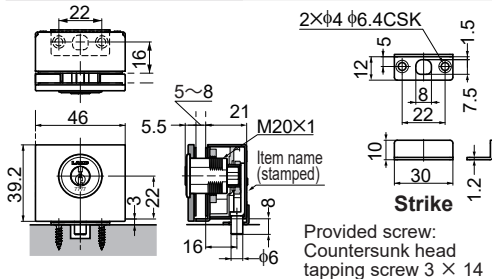


# LAMP<sup>®</sup> GS-GL3-KT<sup>KT</sup> GS-GL3-KF<sup>KF</sup> SWING DOOR LOCK INSTALLATION MANUAL

Thank you for using our product. Before installation, please read this manual thoroughly to ensure correct installation.  
Please keep this manual at hand for future reference.

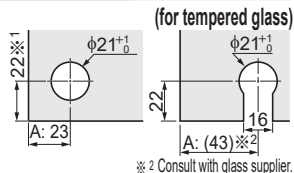
## DIMENSIONS



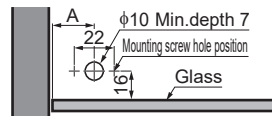
## PROCESS DIMENSIONS

### Glass

※ 1  
With the dead bolt protruding down, if not, it is 22 mm.



### Bottom board

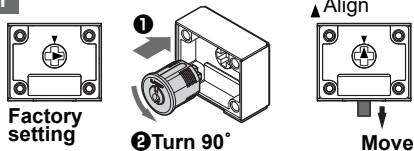


## INSTALLATION

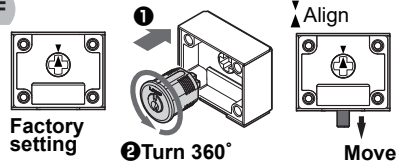
**KT** Key is not removable when unlocked. **KF** Key is removable when unlocked.

### 1 Moving the Dead Bolt

**KT**

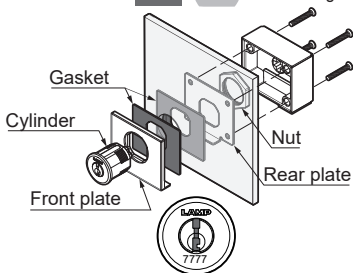


**KF**

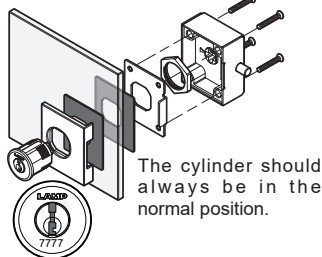


### 2 Assembly

**KT** **KF** Dead bolt goes down

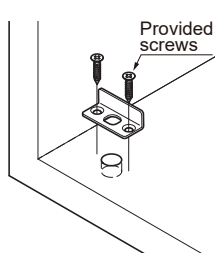


**KT** **KF** Dead bolt goes right



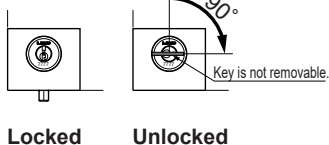
### 3 Mounting of Strike

**KT** **KF**

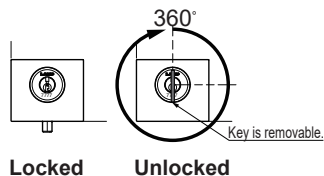


### 4 Operation Check

**KT**



**KF**



**SUGATSUNE KOGYO CO.,LTD**  
Tokyo, JAPAN

Manufacturer of **LAMP** brand Products

Phone: +81 (0)3 3866 2260 E-mail: export@sugatsune.co.jp

2021.03 1388-2