

# LAMP® DOORSTOP MAGNETIC CATCH HT-MSG72-ER

## for Glass Doors with emergency release function INSTALLATION MANUAL

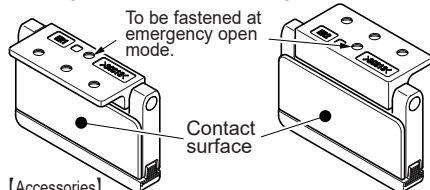
### ⚠ Caution

- ❗ This product should be used in conjunction with hinges that open forwards and backwards.
- ❗ Be sure to check if the emergency release operation can be performed after mounting.

### Component Parts

For thin door frames  
HT-MSG72-ER1

For standard door frames  
HT-MSG72-ER2



[Accessories]

- Hexagon socket countersunk head screw M4×16(SUS304) ... 4 pcs
- ※ All should be used
- Guidance sticker ... 1 pc
- ※ To be pasted nearby the product or on the product.

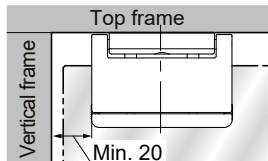
### Required Parts (Sold Separately)

Glass thickness		Strike plate	Packing for strike plate (Chloroprene Rubber)
	A		
8	12.1	HT-MSG62-U8	included in strike plate
10	14.1	HT-MSG62-U10	
12			
12.7	16.1	HT-MSG62-U12	HT-MSG62-P127
13.5			HT-MSG62-P135

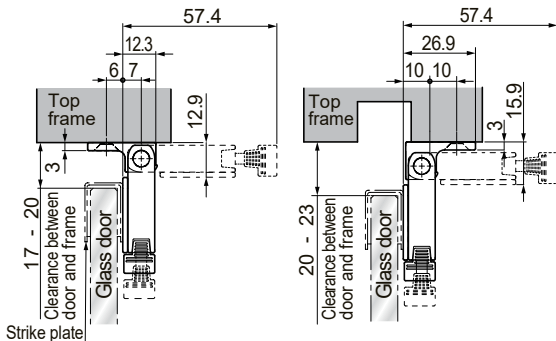
### Dimensions

#### ⚠ Caution

- ❗ The strike plate must be installed on the top of the door. Installation on the bottom or side of the door may cause the strike plate to shift or come off.
- ❗ Install the product at least 20 mm away from the vertical frame so that it does not interfere with the emergency opening operation.



#### For thin doorframes For standard doorframes

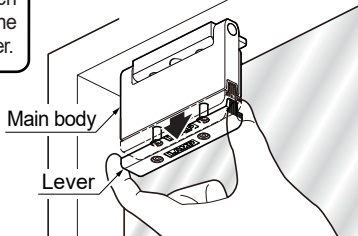


### How to operate the emergency release

#### ⚠ Caution

- ❗ Be careful not to pinch your fingers between the main body and the lever.

- 1 Pull the lever of the main body downward.



- 2 Lift the main body toward you.

