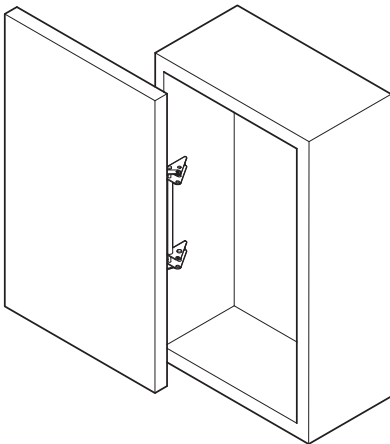


# MonoFlat FAD-5

# Instruction Manual

Thank you for purchasing this MonoFlat FAD-5 by SUGATSUNE. Before proceeding with the installation, please read this instruction manual carefully for the best possible result and ensure your safety.



## ⚠ WARNING

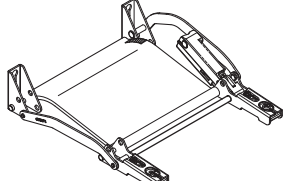
- Failure to observe the following precautions may result in injury and/or lead to damage to surrounding cabinets or fittings.
- Choose suitable screws to ensure of proper installation of the cabinet and door.
- Ensure that door size, weight and material correspond to the specifications stated in this manual.
- Do not disassemble or modify the system.
- Operation temperature range is 0°C - 40°C .
- This product was manufactured and delivered with our utmost care. Should you however find any defect, please contact your dealer immediately.
- The Warranty period is one year after shipment date. Sugatsune's liability shall be limited to replacement of the product and will in no case extend to the assembly as a whole.

## ■ Product Specification

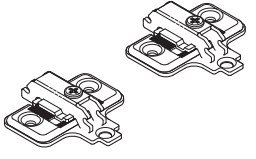
Door width	270 ~ 350mm
Door height	260 ~ 650mm
Door thickness	15 ~ 20mm
Door weight	Max 5kg(per door)

## ■ Parts List

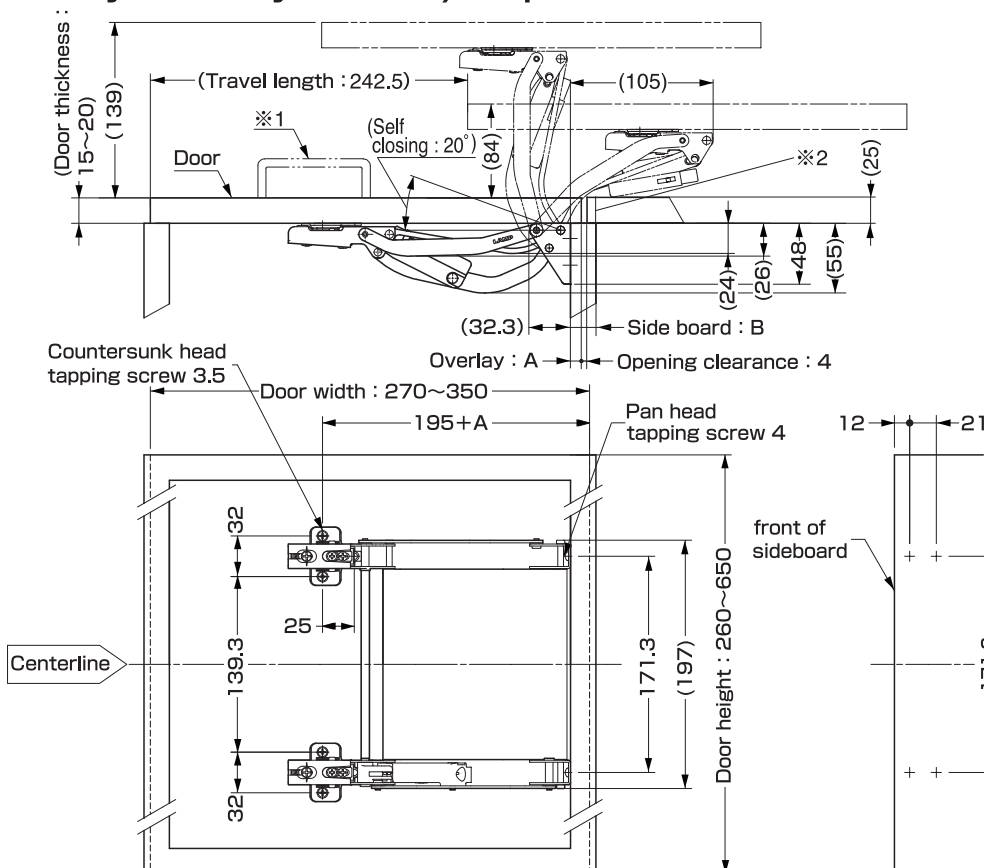
① FAD-5 Body.....	1 pc.
-------------------	-------



② Mounting Plate...	2pcs.
---------------------	-------



## ■ Overall (unit: mm) Picture shows the left hand door use. (Right hand door use is symetrically reverse.) Prepare the door and sideboard as the following dimensions.



- ※ For the continuous doors installation,
1. Be careful for the handle position in the next door.
  2. Be careful for the thickness of cushion material.(Ex: If the door thickness is 20 mm, cushion must be less 3mm/thick.)

side board B (mm)	Overlay A(mm)				
	5	6	7	8	8.5~
15	21.5	—	—	—	—
16	22.5	21.5	—	—	—
17	23	22.5	—	—	—
18	23		22.5	—	—
19	23			—	—
20	23				—
21~	23				
	Total thickness of door and cushion(mm)				

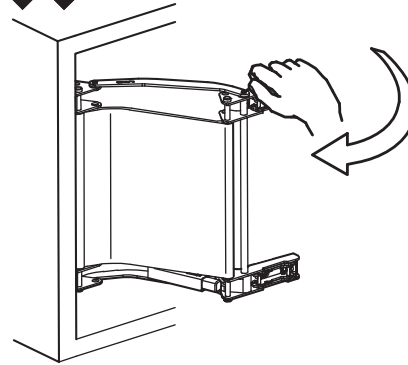
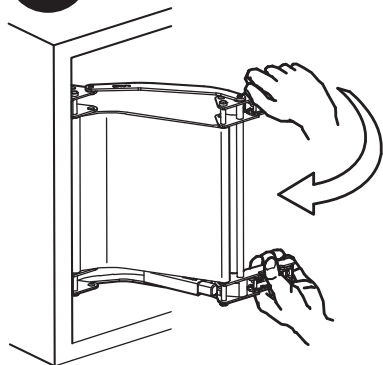


# WARNING

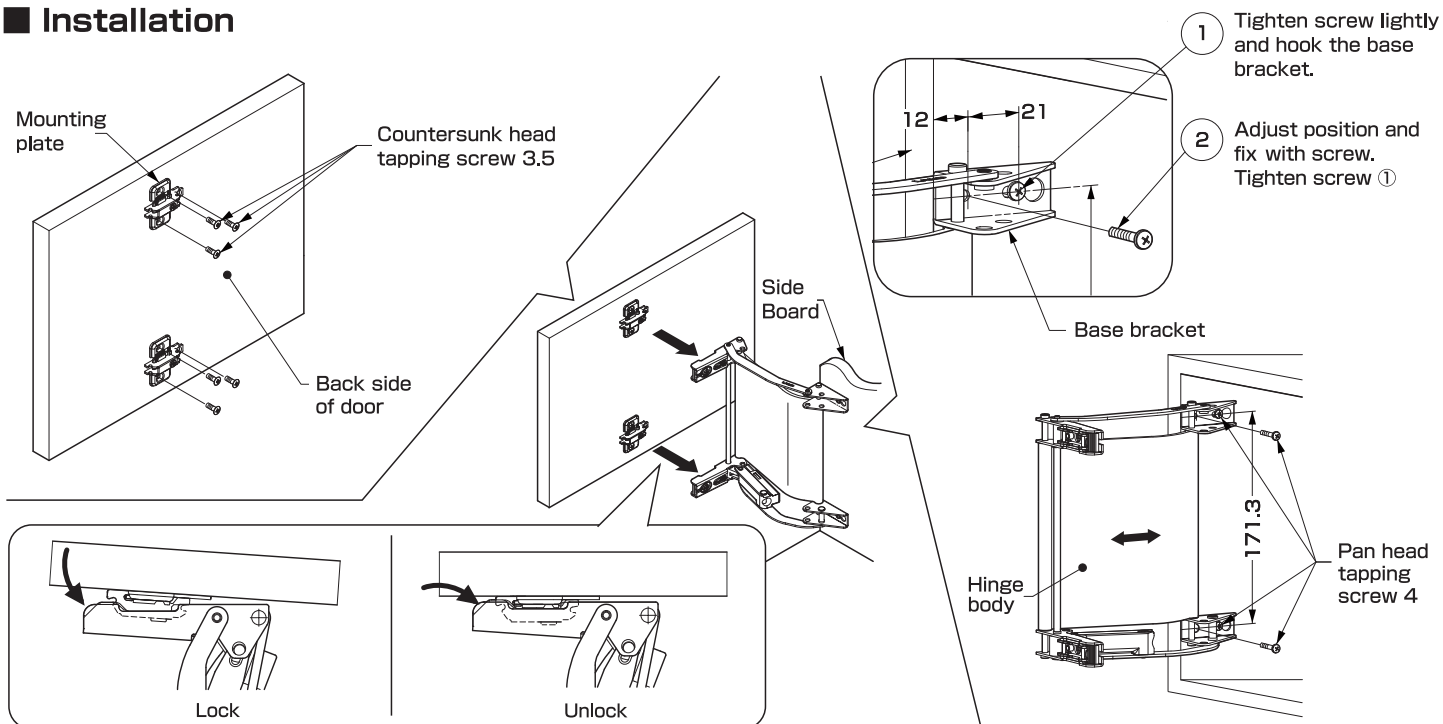
Do not use excessive force when operation the system.



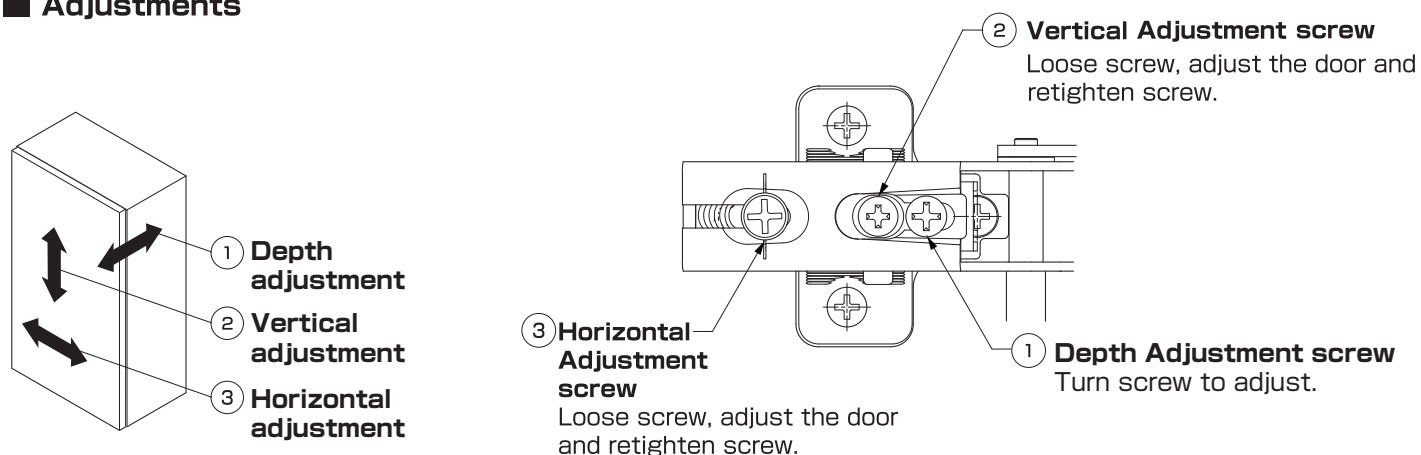
Hold always move both arms at the same time.



## Installation



## Adjustments



- Ensure that all the screws are securely tightened.
- Remove all the protection tape after assembly is finished.

**SUGATSUNE KOGYO CO.,LTD**  
Tokyo, JAPAN

Phone: +81 (0)3 3866 2260 E-mail:export@sugatsune.co.jp

**SUGATSUNE KOGYO (UK) LTD**  
Reading, UK

Phone: +44 118 9272 955 E-mail:sales@sugatsune.co.uk

**SUGATSUNE EUROPE GmbH**  
Düsseldorf, GERMANY

Phone: +49 211 53812900 E-mail:sales@sugatsune.eu

**SUGATSUNE SHANGHAI Co., LTD**  
Shanghai, CHINA

Phone: +86 21 3632 1858 E-mail:lamp@sugatsune.com.cn

**Guangzhou, CHINA**

Phone: +86 20 6639 3552 E-mail:lamp@sugatsune.com.cn

**SUGATSUNE KOGYO INDIA PRIVATE LIMITED**  
Mumbai, INDIA

Phone: +91 22 28314490/91 E-mail:sales@sugatsune.in

**SUGATSUNE AMERICA, INC**  
California, USA

Phone: +1 310 329 6373 E-mail:sales@sugatsune.com

**Chicago, USA**

Phone: +1 312 461 1081 E-mail:chicagoshowroom@sugatsune.com

**SUGATSUNE CANADA, INC.**

Phone: +1 514 312 5267 E-mail:support@sugatsune.ca

ISO9001(Japan Offices and Sugatsune America) and ISO14001(Chiba Production division and Logistics center), certified.

2021.11 1502-1