

LAMP® FD25SP SLIDING DOOR SYSTEM Installation Manual (Recessed Mount Roller)

Part No.FD25SPHHP

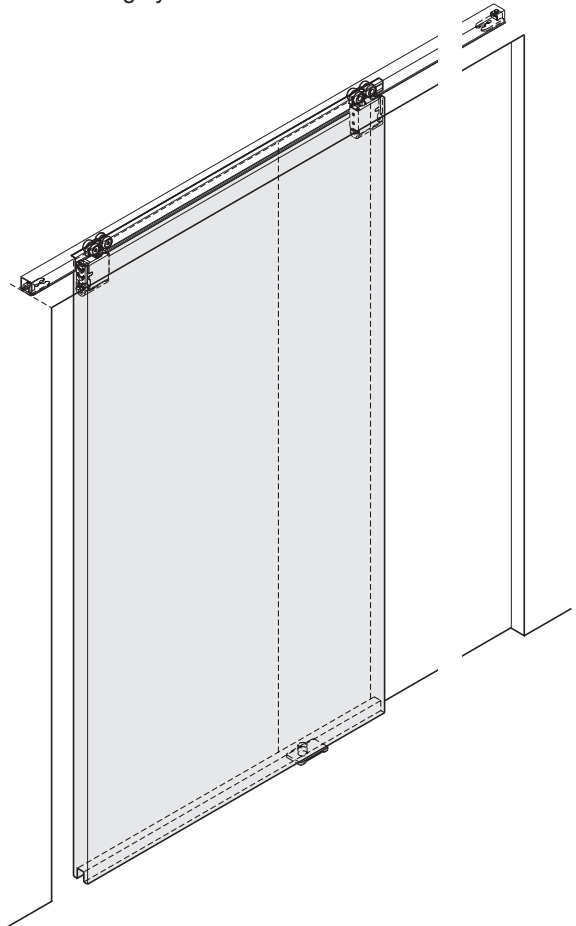
Thank you for using our product. Before installation, please read this manual thoroughly to ensure correct installation. Please keep this manual at hand for future reference.

ABOUT THE PRODUCT

- This is a parts set for a sliding door system for indoor use.
- The door can be installed without the use of tools.

SPECIFICATIONS

Door width	Max. 1000 mm
Door height	Max. 2400 mm
Min. Door thickness	24 mm
Max. Door weight	25 kg
Vertical adjustment	± 3 mm
Depth adjustment	± 2 mm



FOR YOUR SAFETY AND CORRECT INSTALLATION

Meaning of symbols

 Warning Caution	 Prohibited	 Required
---	---	---

Warning : If not followed, death or serious injury may result.



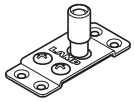
- ❗ This product should be installed by a qualified person in accordance with this manual. If it is not installed correctly, the door may fall and cause injury.
- ❗ Provide a frame that can withstand the weight and impact of opening and closing the door. Be sure to use the specified screws and tighten them securely. If the mounting strength is insufficient, the door may fall and cause injury.
- ⊘ Do not use this product for any other purpose, or with doors that are outside the specifications of this manual.
- ⊘ Do not disassemble or modify any parts other than those described in this document.

Caution : If not followed, injury or damage may result.

- ❗ Follow the specified dimensions, specifications, and alignment of the door and frame. Warping, tilting or twisting of the frame or door may cause failure.
- ❗ If cutting any parts, make sure to remove any burrs before installation. Also check the upper track for any left-over burrs or scraps and remove these.
- ❗ This product is a part for architectural fittings. After installation, please check the function and safety of the final product. Please inform the end user how to use the product safely.
- ❗ Make sure to check the screws for slack at regular intervals (one month from first usage, half a year, and then one time every year is recommended).
- ❗ Install the product with two people (in the case of one person, there is a risk of damaging components).

COMPONENT PARTS

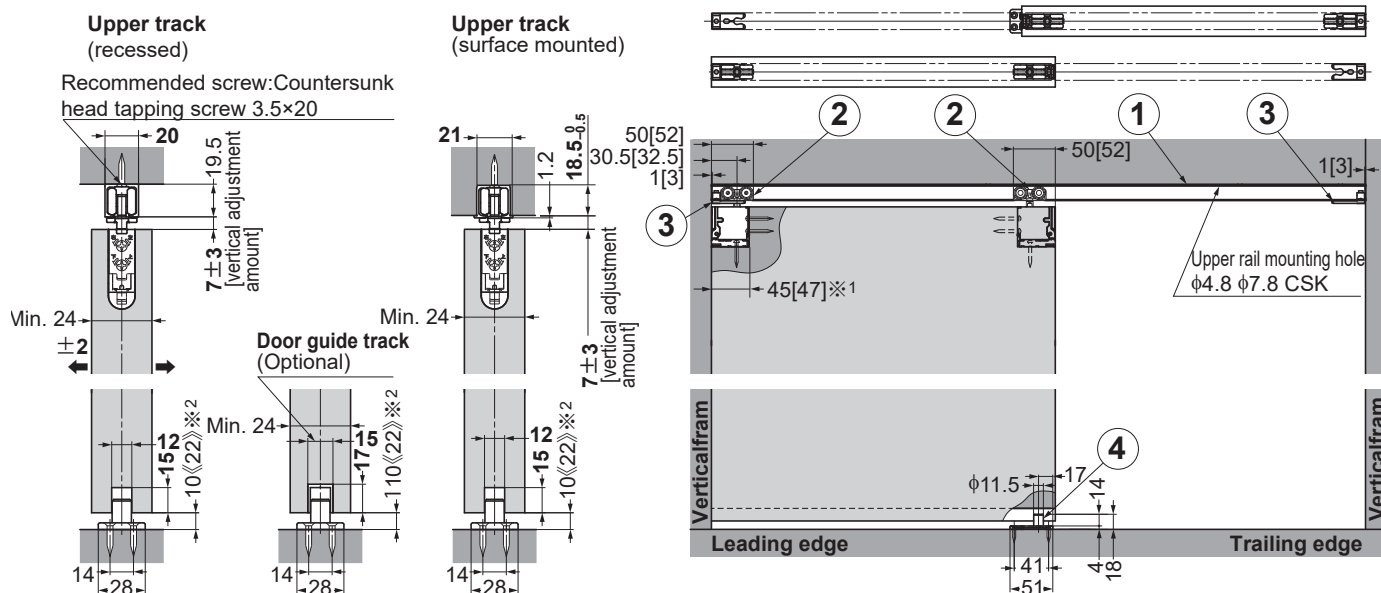
No	①		②	③	④
Name	Upper track (surface mount)	Upper track (recessed mount)	Upper roller	End catch	Floor guide (With rollers)
Item No.	FD30-TRM	FD30-TRH	FD25SP-WRH	FD30-HTST	FD30-HBG
Item					
	910 mm – 4000 mm Hole pitch : 300 mm Pitch end : 30 mm Recommended screw:Countersunk head tapping screw 3.5×20		Accessory: Pan head tapping screw 3.5×30		Accessory: Countersunk head tapping screw 3.5×304 pc
Single sliding door		1 for face or excavation	2 pcs	2 pcs	1 pc
Sliding door		Two pieces for surface application or digging	4 pcs	4 pcs	2 pcs

No	⑤	⑥	⑦
Name	Cover cap	Door guide track	Floor guide (long shaft)
Item No.	FD25SP-WRH-CP	FD30-HBRT	FD30-HBGH
Item		 <p>1000 mm~1500 mm Hole pitch : 250 mm Pitch end: 30 mm Recommended screws: Countersunk head tapping screw 4×20</p>	 <p>Included: Countersunk head tapping screw (stainless steel) 3.5×30 4 pc</p>

Dimensions

Caution

❗ When a vertical frame is not used, apply a twoway soft closer.



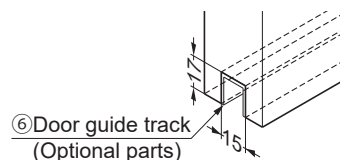
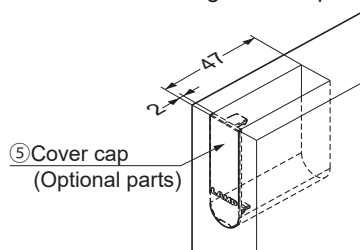
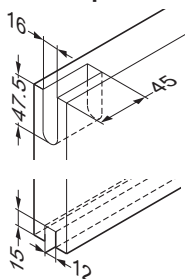
※¹ When cover cap ⑦ (option) is used.

※² 《 》 Dimensions are for when the floor guide (long shaft) is used.

Door process dimensions

※¹ When using cover cap.

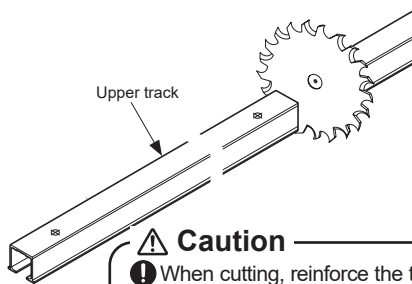
When using door guide track ⑥



INSTALLATION

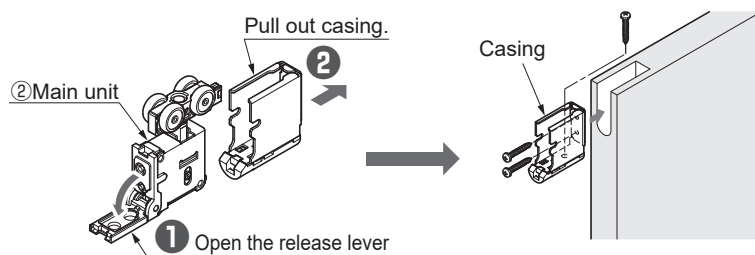
(In this manual, a single sliding door is used as an example.)

1 Cutting and Hole Drilling on Upper Track



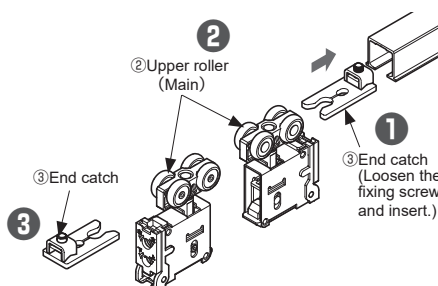
Caution
① When cutting, reinforce the track to prevent deformation at the cut section.

2 Mounting of opening Casing



3 Inserting Parts into Upper Track

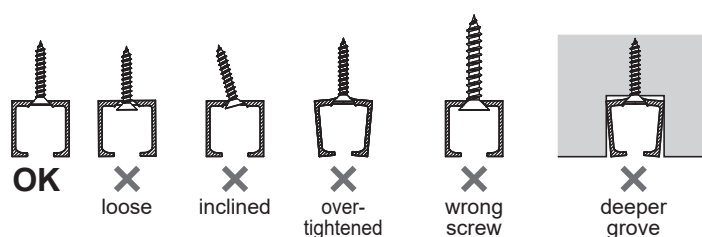
Insert the parts in order from ① to ③ with care of direction.



Caution
① Remove any dust or aluminum chips from the upper track.
② Tape around rollers and upper track to prevent the inserted parts from falling.

4 Mounting of Upper Track

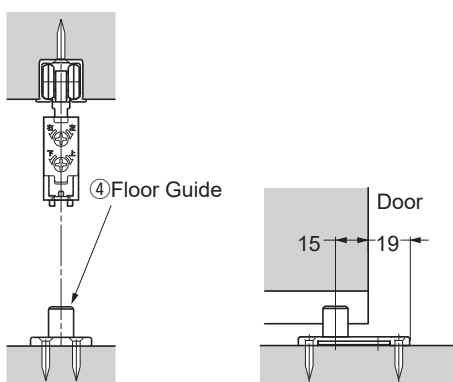
(Recommended screw: Countersunk head tapping screw 3.5 × 20)



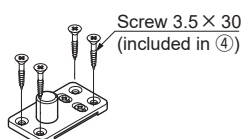
Caution
① Be careful not to overtighten the screws and screw heads protruding on upper track.
② It may cause deformation of track or damage of soft closer.

5 Mounting of Floor Guide

Position the floor guide below the center of the upper track so that it is covered by the door when it is opened and closed.

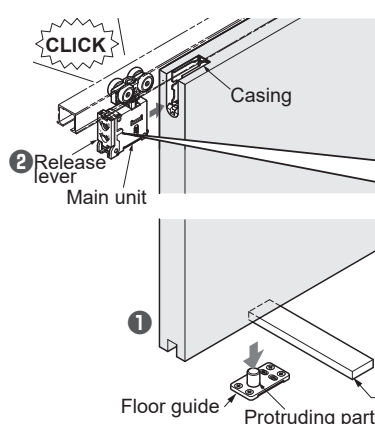


Fasten the four countersunk holes with the provided screws

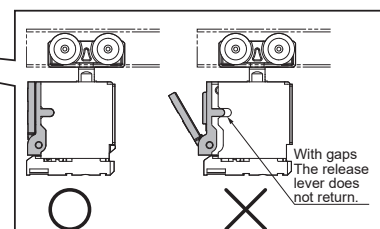


6 Hanging door

- ① Place a 10 mm support under the door. While holding the door, place the groove under the door on the protruding part of the floor guide.
- ② Insert the upper roller until it clicks.



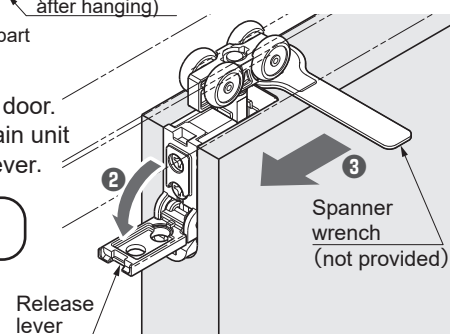
Caution
① Verify that the main unit is not dislocated from the casing, either of the door ends.



How to remove door

- ① Use a 10 mm support under the door.
- ② Then pull out the upper roller main unit from the door while raising the lever.

Caution
① Be careful not to let the door fall.

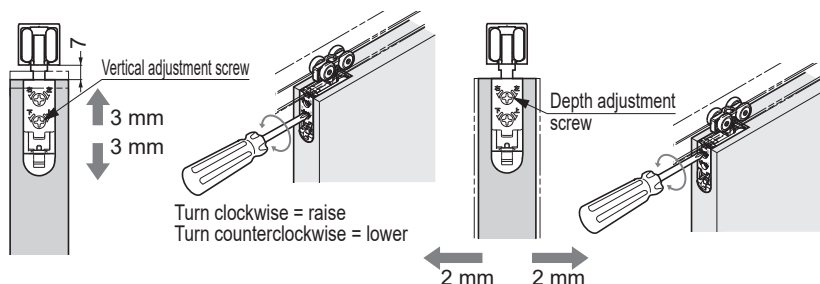


7 Adjusting the door position

Adjust the door parallel to the upper track with 7 - 13 mm of clearance between the door and floor.

Vertical adjustment range: 6 mm

Depth adjustment range: 4 mm

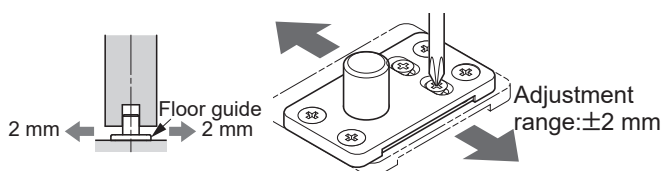


Caution

- ⊘ Do not turn adjustment screw beyond adjustment range.
- ⊘ Do not use electric screw driver.

8 Adjusting the floor guide

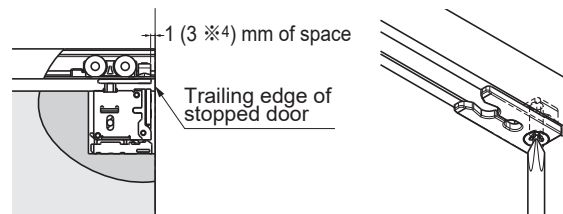
Slowly open and close the door, then, adjust the floor guide so that its interference with the groove under the door is minimized.



9 Fixing the End Catch position

Fix the end catch 1 mm from the position where door stops. Adjust the position of the end catch where it catches the hanger bolt of the roller when the door is stopped by the frame or door stopper.

(※⁴ When using cover cap ⑦, it is 3 mm.)



Caution

- ⊘ Do not overtighten the screw. It may deform the part.

PERIODICAL INSPECTION

- Clean the inside of the track.
- Check the upper and lower space of the door. If necessary, correct the space.

TROUBLESHOOTING

Trouble	Checkpoint	Solution
Abnormal noise during operation	Check if door bottom contacts the floor or floor guide.	Verify that the track mounting screws are not loosened. Then, adjust the door height such that the clearance between the door bottom and floor is 7 - 13 mm.
	Check if door touches adjacent parts.	Adjust the door depth position to avoid contact with other objects or adjust the position of floor guide.
	Check track rollers for aluminum dust.	Remove the track, then pull out and clean the roller.
	Check the upper track retaining screws for looseness.	Retighten the screws to free the roller.
Check if door touches adjacent parts.	Check if door bottom contacts the floor or floor guide.	Verify that the track mounting screws are not loosened. Then, adjust the door height such that the clearance between the door bottom and floor is 7 - 13 mm.
	Check if door touches adjacent parts.	Adjust the door depth position to avoid contact with other objects or adjust the position of floor guide.
Door does not move.	Check the upper track retaining screws for looseness.	Retighten the screws to free the roller.
Door starts to move.	Check if the upper track is set horizontally.	Using a level gauge, reset the upper track horizontally.

SUGATSUNE KOGYO CO.,LTD

Tokyo, JAPAN
Phone: +81 (0)3 3866 2260 E-mail:export@sugatsune.co.jp

SUGATSUNE KOGYO (UK) LTD

Reading, UK
Phone: +44 118 9272 955 E-mail:sales@sugatsune.co.uk

SUGATSUNE EUROPE GmbH

Düsseldorf, GERMANY
Phone: +49 211 53812900 E-mail:sales@sugatsune.eu

ISO9001(Japan Offices and Sugatsune America) and ISO14001(Chiba Production division and Logistics center), certified.

SUGATSUNE SHANGHAI Co., LTD

Shanghai, CHINA
Phone: +86 21 3632 1858 E-mail:lamp@sugatsune.com.cn

Guangzhou, CHINA

Phone: +86 20 6639 3552 E-mail:lamp@sugatsune.com.cn

SUGATSUNE KOGYO INDIA PRIVATE LIMITED

Mumbai, INDIA
Phone: +91 22 28314490/91 E-mail:sales@sugatsune.in

SUGATSUNE AMERICA, INC

California, USA
Phone: +1 310 329 6373 E-mail:sales@sugatsune.com

Chicago, USA

Phone: +1 312 461 1081 E-mail:chicagoshowroom@sugatsune.com.

SUGATSUNE CANADA, INC.

Phone: +1 514 312 5267 E-mail:support@sugatsune.ca