

LAMP® FD30EX SLIDING DOOR SYSTEM Installation Manual

Recessed Mount Roller, One-Way Soft Close

Part No.FD30EXHCP

Thank you for using our product. Before installation, please read this manual thoroughly to ensure correct installation. Please keep this manual at hand for future reference.

ABOUT THE PRODUCT

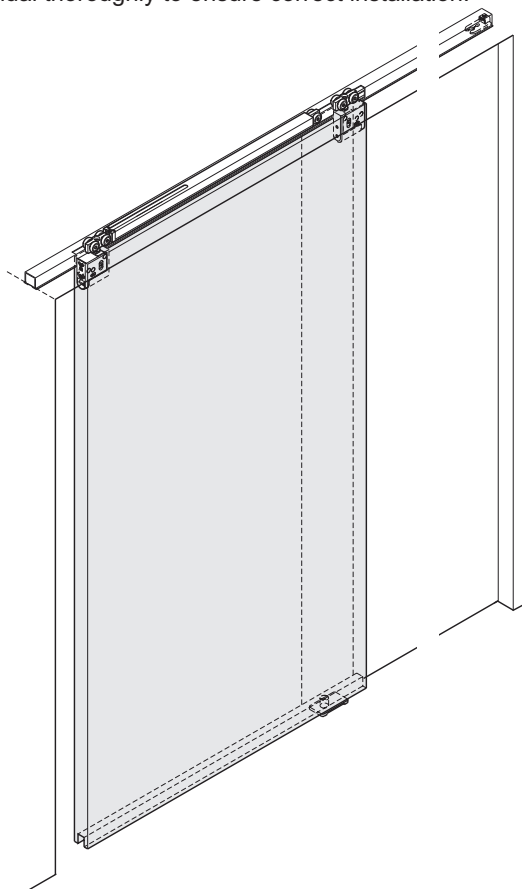
- This product is a sliding door system for indoor use.
- The door closes in 2 step sequential soft motion.
- The door can be installed without the use of tools.

SPECIFICATIONS

Max. Door height	2400 mm
Max. Door width	510 - 1000 mm
Min. Door thickness	24 mm
Max. Door weight	30 kg ※ ¹
Vertical adjustment	3 mm upward, 4 mm downward
Depth adjustment	±2 mm

- The closing speed of the soft closing type door may change depending on the ambient temperature, operating method or installation quality.
- Recommended ambient temperature range is 5 to 40°C.

※¹ When using a light weight door, you may feel the resistance of the soft closer when opening the door.



FOR YOUR SAFETY AND CORRECT INSTALLATION

Meaning of symbols

 Warning Caution	 Prohibited	 Required
---	---	---



WARNING: If not followed, death or serious injury may result.

- ❗ This product should be installed by a qualified person in accordance with this manual. If it is not installed correctly, the door may fall and cause injury.
- ❗ Provide a frame that can withstand the weight and impact of opening and closing the door. Be sure to use the specified screws and tighten them securely. If the mounting strength is insufficient, the door may fall and cause injury.
- ⊘ Do not use this product for any other purpose, or with doors that are outside the specifications of this manual.
- ⊘ Do not disassemble or modify any parts other than those described in this document.

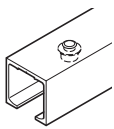
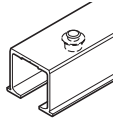
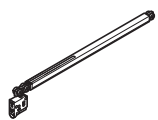

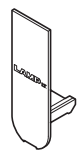
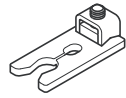
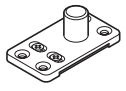


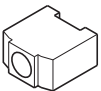
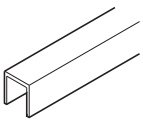
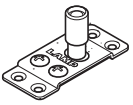
Caution: If not followed, injury or damage may result.


- ❗ Follow the specified dimensions, specifications, and alignment of the door and frame. Warping, tilting or twisting of the frame or door may cause failure.
- ❗ If cutting any parts, make sure to remove any burrs before installation. Also check the upper track for any left-over burrs or scraps and remove these.
- ❗ This product is a part for architectural fittings. After installation, please check the function and safety of the final product. Please inform the end user how to use the product safely.
- ❗ Make sure to check the screws for slack at regular intervals (one month from first usage, half a year, and then one time every year is recommended).

COMPONENT PARTS

(This describes installation of a single sliding door.)

No.	①		②	③	④	⑤	⑥
Name	Upper track (surface mount)	Upper track (Recessed mount)	Soft closer (one-way)	Upper roller	Cover cap	Door catcher	Floor guide (with roller)
Item No.	FD30-TRM	FD30-TRH	FD30EX-WRH-SC	FD30-WRH	FD30-WRH-CP	FD30-HTST-GR	FD30-HBG
Item	 Hole pitch : 300 mm Pitch end : 30 mm	 Hole pitch : 300 mm Pitch end : 30 mm					
Accessories	—	—	Pan head tapping screw 3.5×30 3 pcs	Pan head tapping screw 3.5×30 4 pcs	—	—	Countersunk head tapping screw 3.5×30 ... 5 pcs
Remarks	Recommended screw : Countersunk head tapping screw 3.5×20		—	—	—	—	—

OPTIONAL PARTS	No.	⑦	⑧	⑨
	Name	Stopper block	Door bottom guide track	Floor guide with roller(long shaft)
	Item No.	FD30-HSB	FD30-HBRT1500SIL	FD30-HBGH
	Item		 Hole pitch : 250 mm Pitch end : 30 mm	 Countersunk head tapping screw 3.5×30 ... 4 pcs

Accessory	Spanner wrench
	FD30-FSP 

INSTALLATION PROCEDURE

In this manual, a single sliding door is used as an example.

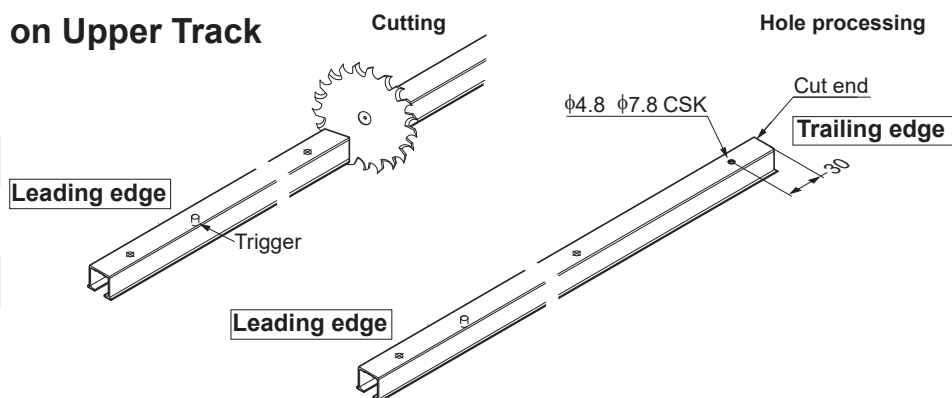
1 Cutting and Hole Drilling on Upper Track

⚠ Caution

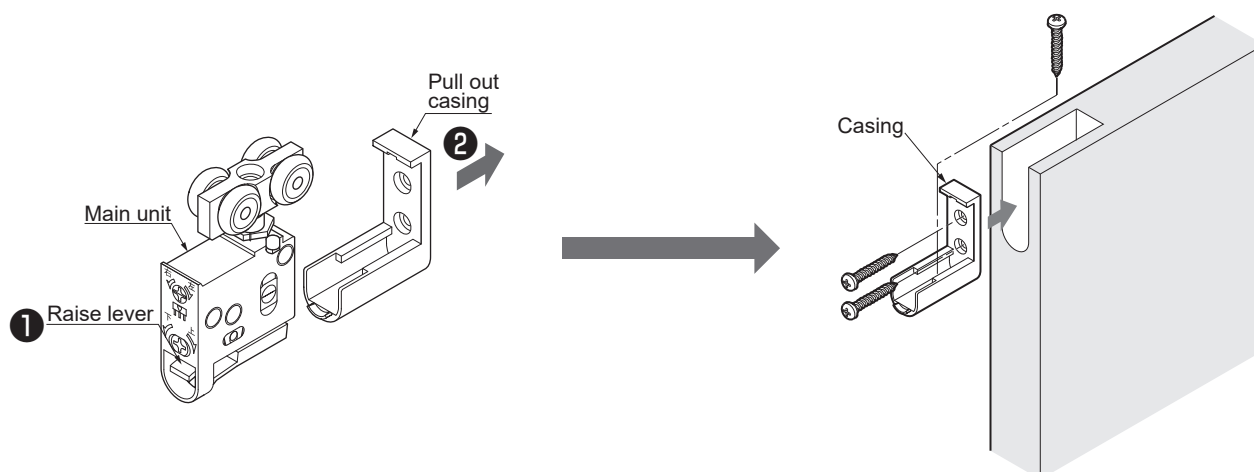
Do not cut trigger side (leading edge) of upper track.

⚠ Caution

When cutting, reinforce the track to prevent deformation at the cut section.



2 Mounting Parts on Door



3 Verification Before Installing Soft Closer

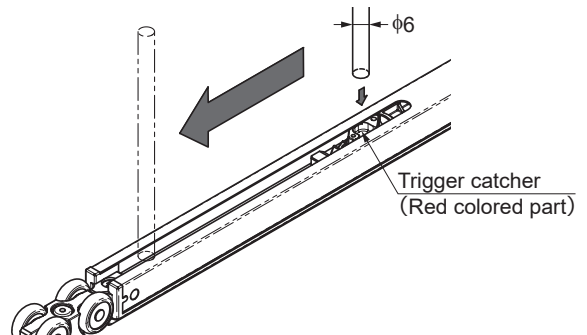
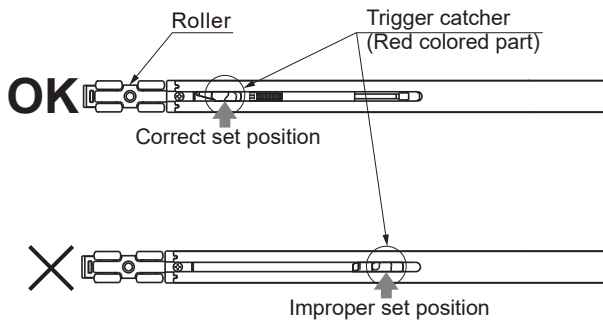
⚠ Caution

Without verification the self closing feature may fail.

VIDEO LINK

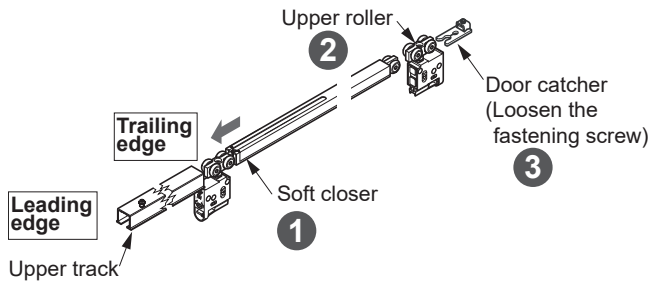


If the trigger position is wrong, pull back the trigger catcher to the correct position using a 6mm diameter round bar.



4 Inserting Parts into Upper Track

Insert the parts in order from ① to ③ with care of direction.



⚠ Caution

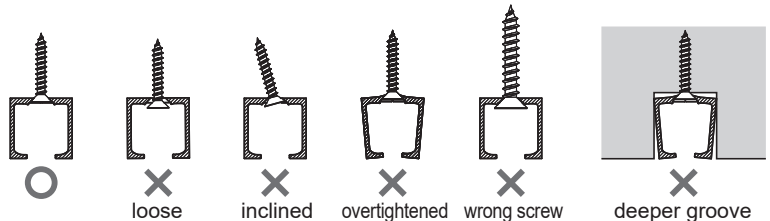
- ❗ Remove any dirt or aluminum chips from the track.
- ❗ Tape around rollers and upper track to prevent inserted parts from falling.

5 Mounting of Upper Track

(Recommended screw: Countersunk head tapping screw 3.5×20)

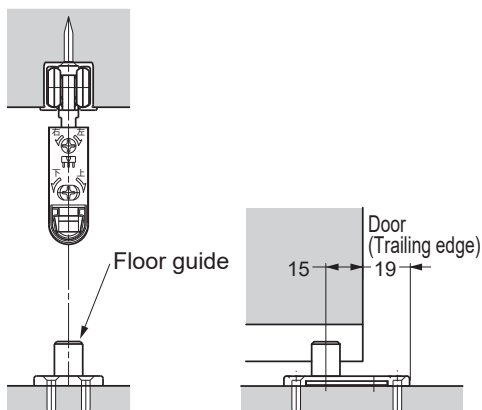
⚠ Caution

- ❗ Be careful not to overtighten the screws and screw heads protruding on upper track.
- ⊘ It may cause deformation of track or damage of soft closer.

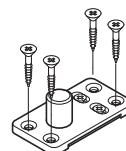


6 Mounting Floor Guide

Position floor guide just below the center of the upper track.

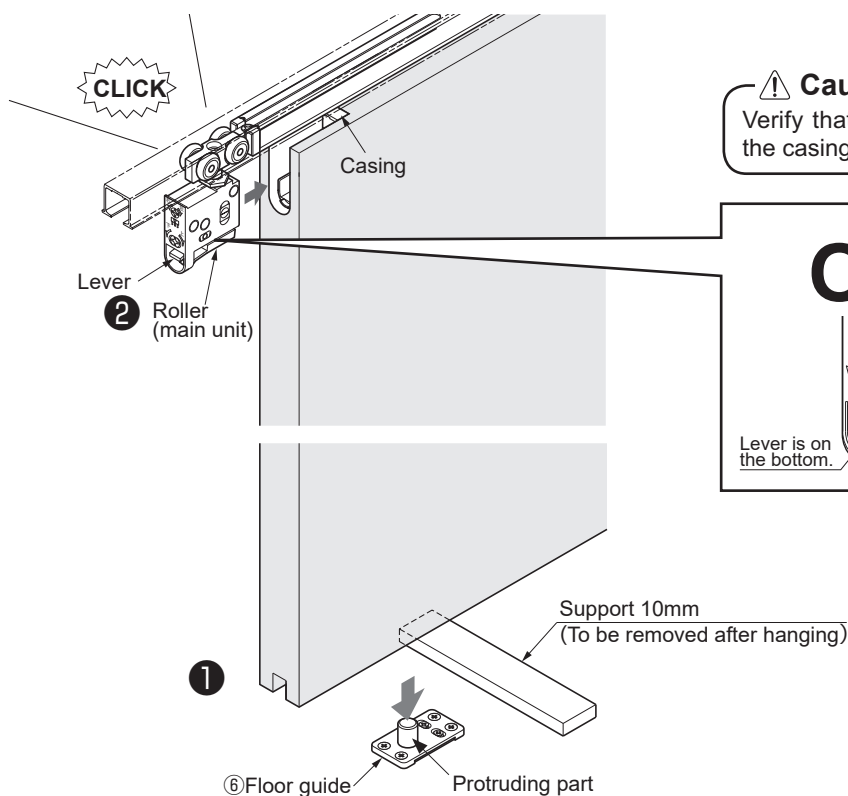


Fasten the four countersunk holes with provided screws.

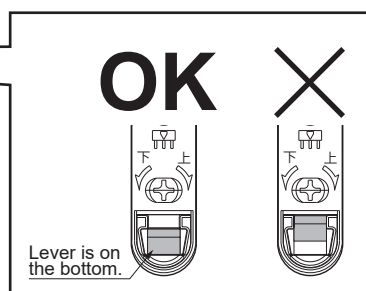


7 Hanging Door

- ① Place a 10 mm support under the door.
- ② While holding the door, place the groove under the door on the protruding part of the floor guide.



Caution
Verify that the main unit is not dislocated from the casing, for either of the door ends.



③ Verification of Soft Closer Operation

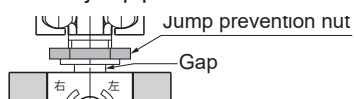
- Starting point of soft - close.
- Leading edge : approx. 100mm before closed position.

8 Adjusting the Door Position

Adjust door parallel to the upper track with 6-13 mm clearance between the door and floor.

Caution

- ! The adjustment of the door should be done with the jump prevention nut loosened.

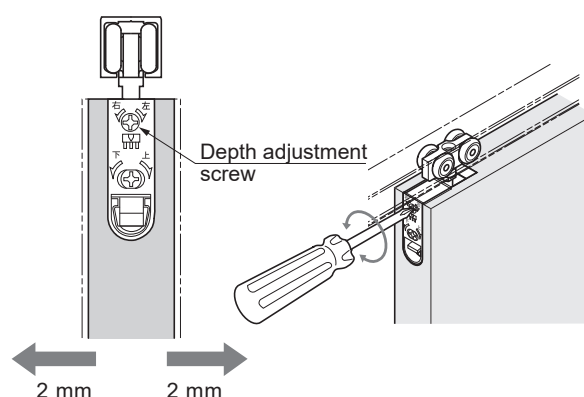
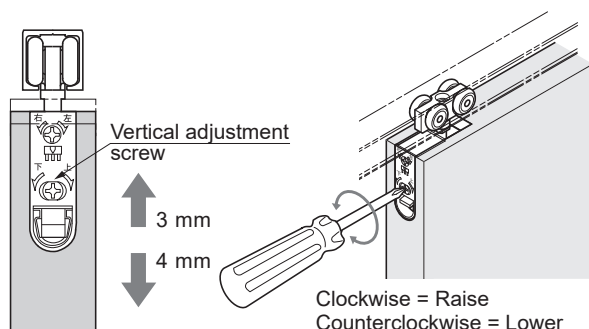


- ⊘ Do not turn adjustment screw beyond adjustment range.
- ⊘ Do not use electric screw driver.



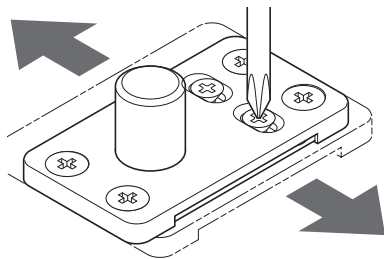
Vertical adjustment range: 7 mm

Depth adjustment range: 4 mm



9 Adjusting the floor guide

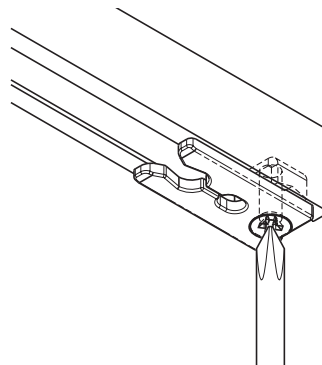
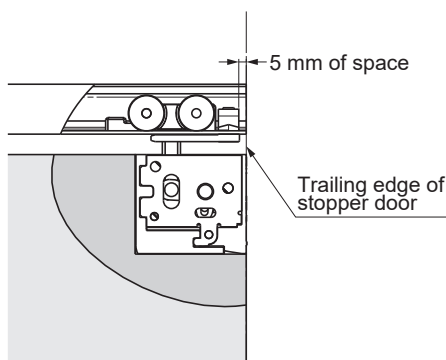
If the door movement is not smooth, remove the door, then adjust the floor guide forwards or backwards.



Adjustment range : 4 mm

10 Fixing End Catch Position (Trailing edge)

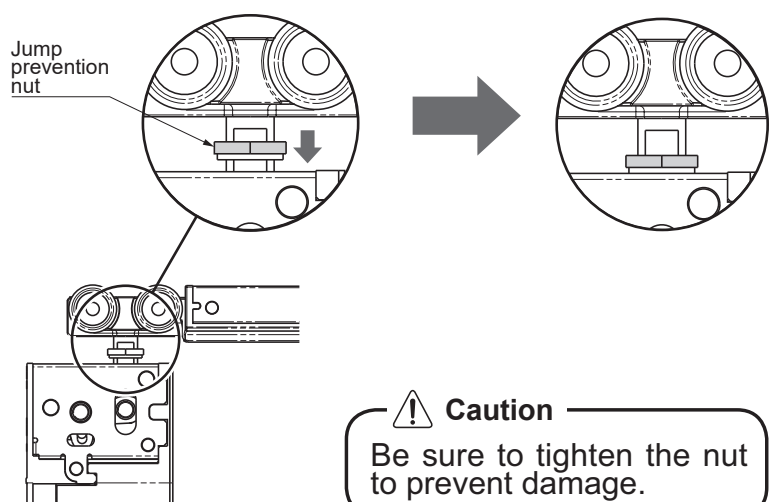
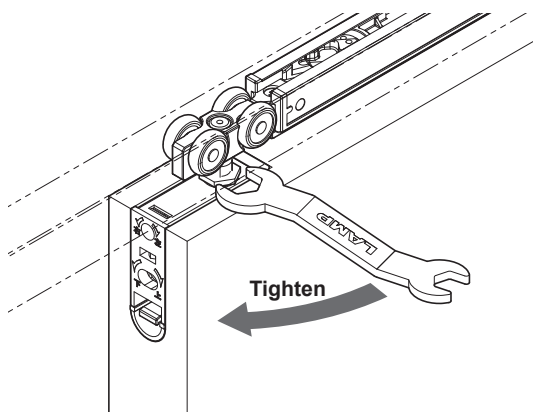
Fix the end catch 5 mm from the position where the door stops.
Adjust the position of the end catch where it catches the hanger bolt of the roller when the door is stopped by the frame or door stopper.



Caution
Do not overtighten the screw.
It may deform the part.

11 Fastening the Jump Prevention Nut

The jump prevention nut is on the hanger bolt of the upper roller.
Tighten the nut with the provided spanner wrench until it contacts the soft closer.



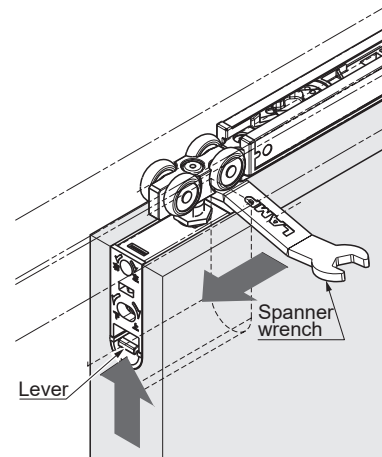
Caution
Be sure to tighten the nut to prevent damage.

APPENDIX How to remove door

Use a 10mm support under the door.
Then pull out the upper roller main unit from the door while raising the lever.

It will be easier if you slide the hanger bolt with a spanner.

Caution
Be careful not to let the door fall.



PERIODICAL INSPECTION	<ul style="list-style-type: none"> • Clean the inside of the track. • Check the upper and lower space of the door. If necessary, correct the space.
------------------------------	---

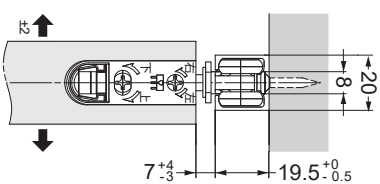
TROUBLESHOOTING

Trouble	Checkpoint	Solution
Door stops during soft closing.	Check if door bottom contacts the floor or floor guide.	Verify that the track mounting screws are not loosened. Then, adjust the door height such that the clearance between the door bottom and floor is 6 - 13 mm.
	Check if the upper track is set horizontally.	Using a level gauge, reset the upper track horizontally.
	Check if mohair seal is installed.	Reduce the friction between the mohair seal and door.
No soft closing	Check if trigger is installed.	Install trigger to specified position.
	Check if door is closed by excessive force.	Do not close door by excessive force as it may damage the soft closer.
	The position of the trigger catcher in page 3 section 3 may become dislocated. (It is hidden as installed in upper track.)	Slowly move the door towards the leading edge, then push the door firmly. Repeat this action on the opposite side as well. If it is still not improved, check the status of the trigger catcher in section 3.
Abnormal noise during operation	Check if door touches adjacent parts.	Adjust the door depth position to avoid contact with other objects or adjust the position of floor guide.
	Check track rollers for aluminum dust.	Remove the track, then pull out and clean the roller.
	Check the upper track retaining screws for looseness.	Retighten the screws to free the roller.
Heavy door operation	Check if door touches adjacent parts.	Correct door position to avoid contact with other objects. Adjust position of floor guide or stopper.
	Check if door is warped.	Replace door with one that is not warped.
Door does not move.	Check the upper track retaining screws for looseness.	Retighten the screws to free the roller.
End catch does not work properly.	Check if roller is installed correctly.	If a roller for the two-way soft closer (FD30-WRH-N) is installed by mistake, the jump prevention nut on the roller will interfere with the end catch. Replace it with the correct roller.

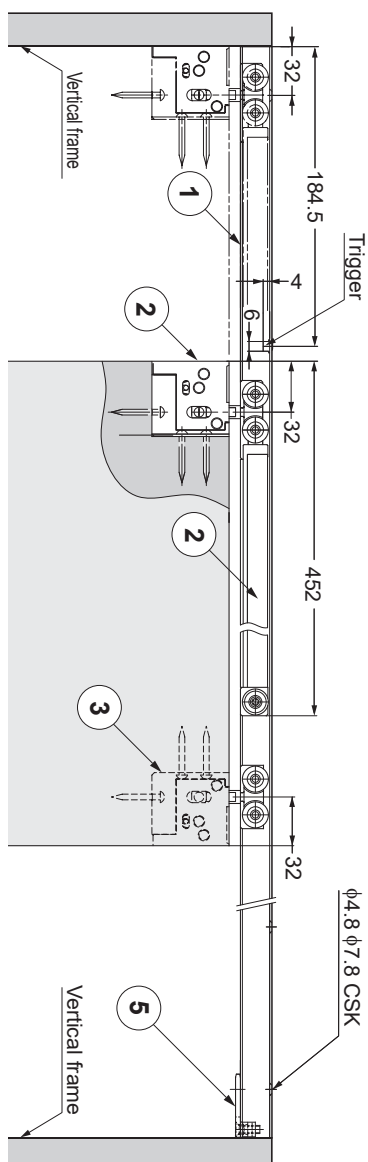
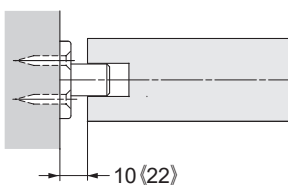
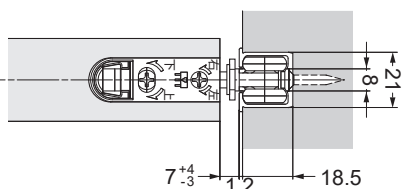
INSTALLATION DRAWING (EXAMPLE)

In this manual, a single sliding door is used as an example.

Track
(Surface Mounted)



Track
(Recessed)

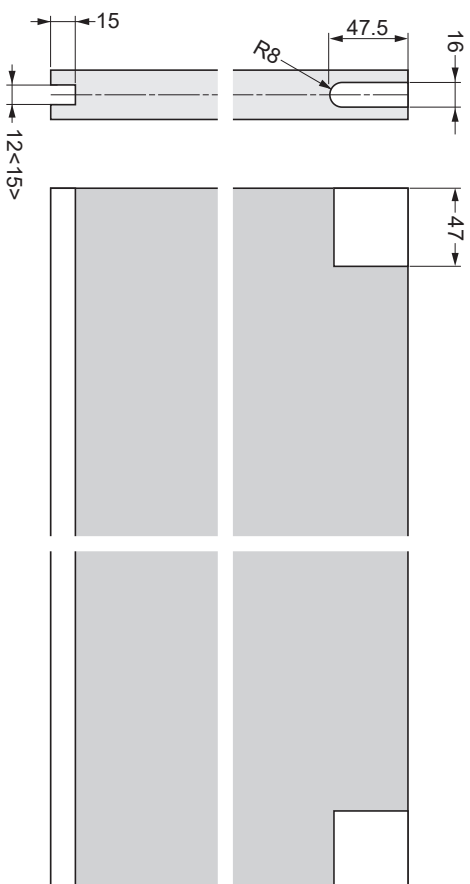


Caution
When a vertical frame is not used,
apply a two-way soft closer.

Dimensions in <> : When recessed guide track ⑦ under door (option) is used.

<> : When long shaft floor guide ⑧(option) is used.

Door process dimensions
Groove processing
dimensions for upper roller
and lower guide.



SUGATSUNE KOGYO CO.,LTD**Tokyo, JAPAN**

Phone: +81 (0)3 3866 2260 E-mail:export@sugatsune.co.jp

SUGATSUNE KOGYO (UK) LTD**Reading, UK**

Phone: +44 118 9272 955 E-mail:sales@sugatsune.co.uk

SUGATSUNE EUROPE GmbH**Düsseldorf, GERMANY**

Phone: +49 211 53812900 E-mail:sales@sugatsune.eu

SUGATSUNE SHANGHAI Co., LTD**Shanghai, CHINA**

Phone: +86 21 3632 1858 E-mail:lamp@sugatsune.com.cn

Guangzhou, CHINA

Phone: +86 20 6639 3552 E-mail:lamp@sugatsune.com.cn

SUGATSUNE KOGYO INDIA PRIVATE LIMITED**Mumbai, INDIA**

Phone: +91 22 28314490/91 E-mail:sales@sugatsune.in

SUGATSUNE AMERICA, INC**California, USA**

Phone: +1 310 329 6373 E-mail:sales@sugatsune.com

Illinois, USA

Phone: +1 630 317 7072 E-mail:sales@sugatsune.com

SUGATSUNE CANADA, INC.

Phone: +1 514 312 5267 E-mail:support@sugatsune.ca

ISO9001(Japan Offices and Sugatsune America) and ISO14001(Chiba Production division and Logistics center), certified.

2022.03 1269-2