

# INSTALLATION MANUAL

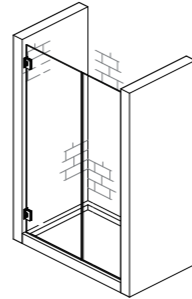
## GH-J130 SOFT-CLOSE GLASS DOOR HINGE

LAMP®

Thank you for selecting our product. Before starting installation, please read this manual thoroughly to ensure correct installation. Please keep this manual at hand for future reference.

### ABOUT THE PRODUCT

- A glass door hinge that can be used in wet areas including shower booths.
- 0° position adjustment.
- Adjustable soft-closing mechanism.
- Comes with a cover that prevents water from entering.

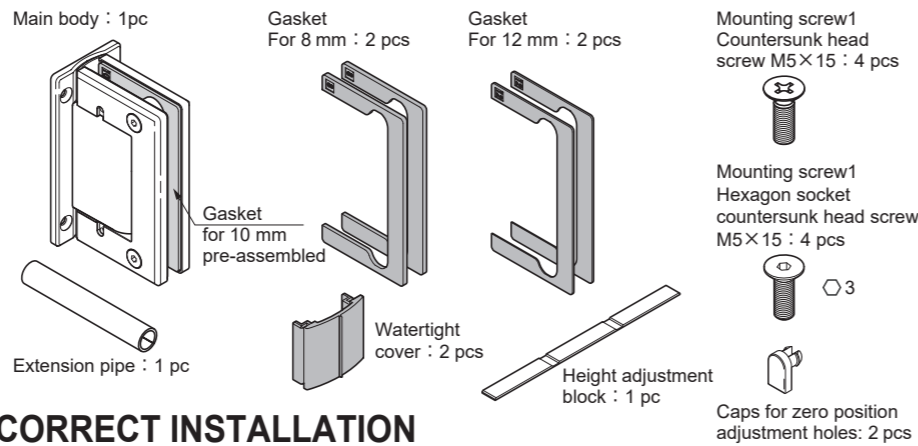


### SPECIFICATIONS

Glass thickness	8、10、12 mm	
Max. Door width	1000 mm	
Door height	Glass thickness 8	2200 mm
	Glass thickness 10	2600 mm
	Glass thickness 12	3000 mm
Max. Door weight※	80 kg / 2 pcs	

※Prioritize the load capacity when determining the glass size.

### COMPONENT PARTS



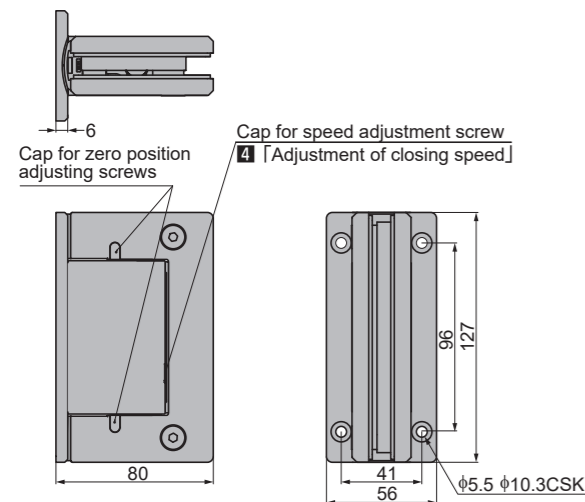
### FOR YOUR SAFE WORK AND CORRECT INSTALLATION

Meaning of symbols Warning Caution Prohibited Required

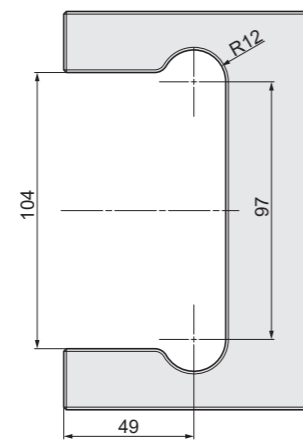
**Caution:** If not followed, injury or damage may result.

- ❗ Provide a frame that can withstand the weight and impact of opening and closing the door. Be sure to use the specified screws and tighten them securely. If the mounting strength is insufficient, the door may fall and cause injury.
- ❗ Follow the specified dimensions, specifications, and alignment of the door and frame. Warping, tilting or twisting of the frame or door may cause failure.
- ❗ This product is a part for architectural fittings. After installation, please check the function and safety of the final product. Please inform the end user how to use the product safely.
- ❗ Use tempered glass. Using shatter-proof film is recommended. For areas where the products grip, it is recommended to remove the shatter-proof film before installing. If left unremoved, slippage due to the shatter proof film may affect the proper function of the door. Please consult with the glass and film suppliers before proceeding.
- ❗ Set a doorstop to prevent the door from opening over 90°. The hinge does not stop at 90° by itself.
- ❗ Make sure to check the screws for slack at regular intervals (one month from first usage, half a year, and then one time every year is recommended).
- ❗ Never turn any screws other than those described in this manual.

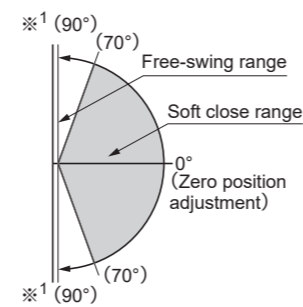
### Dimensions (Please pre-drill holes based on the drawing below for hinge installation.)



### Cut Out Dimensions



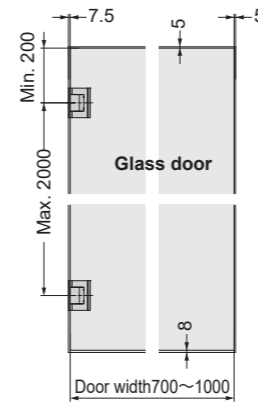
### Operating Angle



※<sup>1</sup> (90°) (70°) Free-swing range  
Soft close range  
0° (Zero position adjustment)  
※<sup>1</sup> (90°) (70°)  
※<sup>1</sup> The door won't stop at 90 degrees. Please prepare a doorstop to prevent the door from opening over 90°.

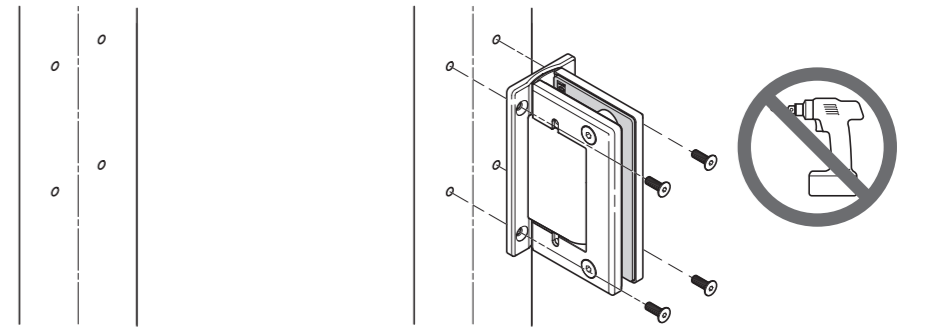
SUGATSUNE

### Hinge mounting position / Clearance

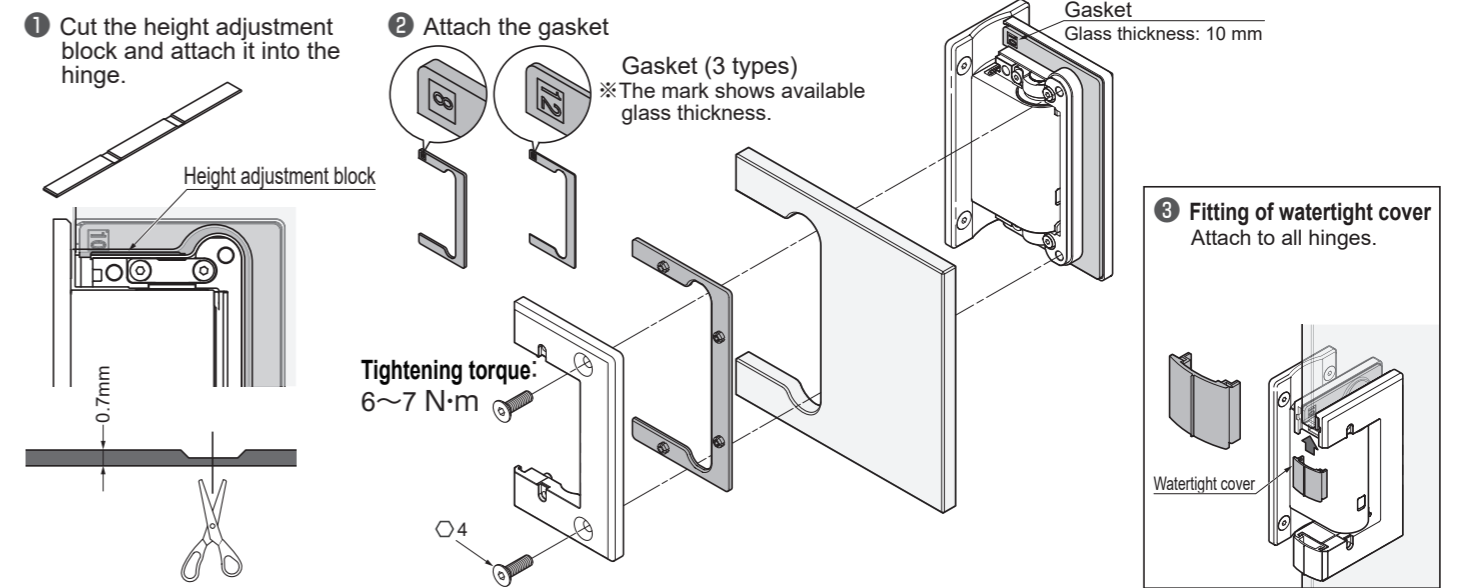


### INSTALLATION

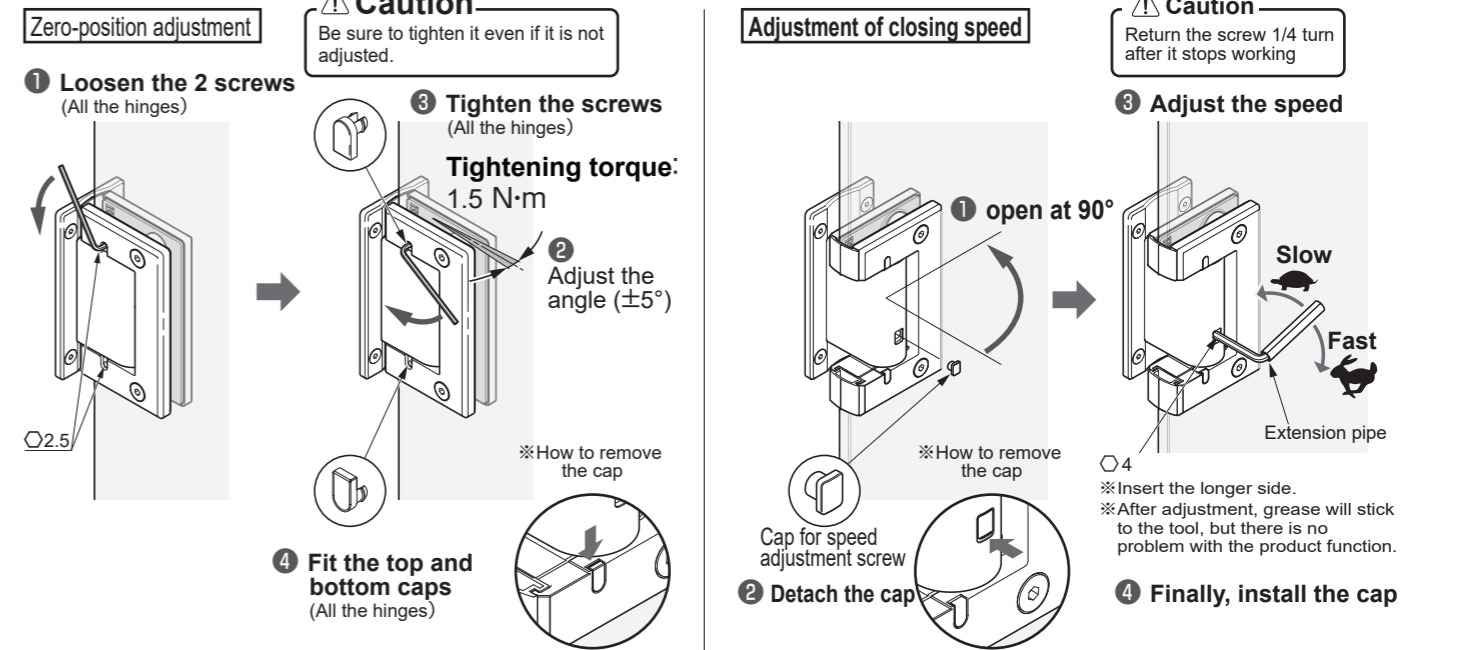
#### 1 Mounting hole Machining 2 Mounting hinge onto Doorframe



#### 3 Hanging Door Attach the height adjustment block to the hinge if needed.



#### 4 Adjustment of Door



SUGATSUNE KOGYO CO., LTD.  
Tokyo, JAPAN  
Phone: +81 3 3866 2260  
E-mail: export@sugatsune.co.jp

SUGATSUNE KOGYO (UK) LIMITED  
Reading, UK  
Phone: +44 1189 272 955  
E-mail: sales@sugatsune.co.uk

SUGATSUNE EUROPE GmbH  
Düsseldorf, GERMANY  
Phone: +49 211 53812 900  
E-mail: sales@sugatsune.eu

SUGATSUNE AMERICA, INC.  
California, USA  
Phone: +1 310 329 6373  
E-mail: sales@sugatsune.com

Chicago, USA  
Phone: +1 630 317 7072  
E-mail: sales@sugatsune.com

SUGATSUNE CANADA, INC.  
Montreal, CANADA  
Phone: +1 514 312 5267  
E-mail: support@sugatsune.ca

SUGATSUNE SHANGHAI CO., LTD.  
Shanghai, CHINA  
Phone: +86 21 3632 1858  
E-mail: sales@sugatsune.com.cn

Guangzhou, CHINA  
Phone: +86 20 6639 3554  
E-mail: lamp@sugatsune.com.cn

SUGATSUNE KOREA CO., LTD.  
Incheon, KOREA  
Phone: +82 32 220 0603  
E-mail: sales@sugatsune-korea.co.kr

SUGATSUNE KOGYO INDIA PRIVATE LIMITED  
Mumbai, INDIA  
Phone: +91 9867299597  
E-mail: sales@sugatsune.in

Delhi, INDIA  
Phone: +91 9867299597  
+91 11 45093636  
E-mail: sales@sugatsune.in