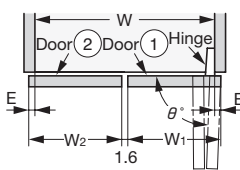
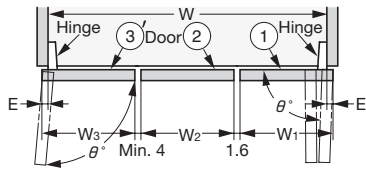
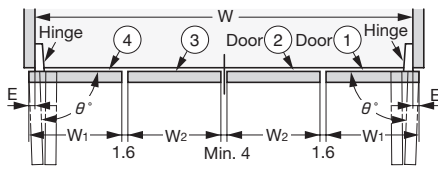
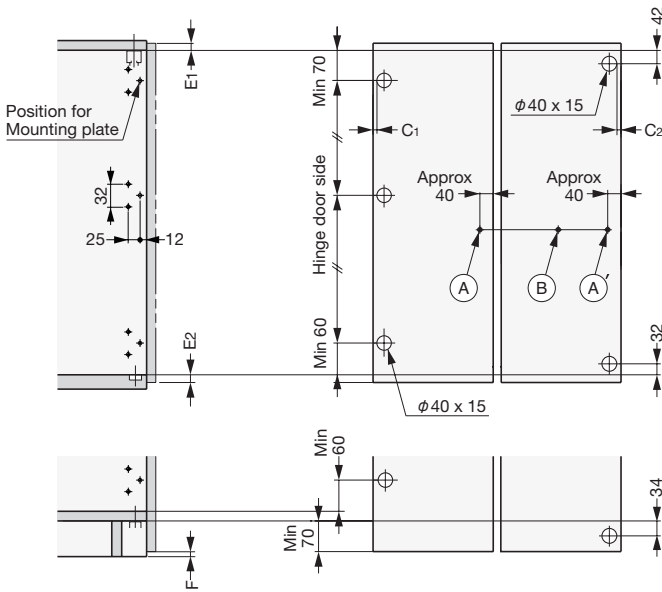


CABINET / DOOR WIDTH DIMENSIONS

Application	Hinged door at 90° open	Hinged door at 95° open	Other door at 87.5° open
2 Doors folding  <p> W = Width of inside cabinet W1 = Width of door ① and ④ W2 = Width of door ② and ③ W3 = Width of door ③' E = Coverage θ° = Opening angle at hinged door </p>	$W_1 = \frac{W + 2E - 3.3}{2}$ $W_2 = W_1 + 1.7$	$W_1 = \frac{W + 2E - 6.8}{2}$ $W_2 = W_1 + 5.2$	$W_1 = \frac{W + 2E - 1.6}{2}$ $W_2 = W_1$
2 Doors folding and 1 swing open 	$W_3 = W_1$ $W_1 = \frac{W + 2E - 7.3}{3}$ $W_2 = W_1 + 1.7$	$W_3 = W_1$ $W_1 = \frac{W + 2E - 10.8}{3}$ $W_2 = W_1 + 5.2$	$W_1 = \frac{W + 2E - 5.6}{3}$
2 Doors folding and 2 Doors folding 	$W_1 = \frac{W + 2E - 10.6}{4}$ $W_2 = W_1 + 1.7$	$W_1 = \frac{W + 2E - 17.6}{4}$ $W_2 = W_1 + 5.2$	$W_1 = \frac{W + 2E - 7.2}{4}$ $W_1 = W_2$

DOOR PROCESS DIMENSION

The drawing describes the right handed opening type.
The left-handed opening type is a mirror image.



E1 = Coverage (top)
 E2 = Coverage (bottom)
 F = Gap between door bottom and floor (10mm)

Required Parts

Door Height	Concealed hinge ④ Mounting plate ⑤ (pcs)	Center hinge ⑥ (pcs)
900 mm	2	3
1600 mm	3	3
2000 mm	4	4
2400 mm	5	4

Coverage at Hinge door side	C1 - Dimension	C2 - Dimension
22 mm	4 mm	5 mm
23 mm	5 mm	6 mm
24 mm	6 mm	7 mm
25 mm	7 mm	8 mm
26 mm	8 mm	9 mm

Opening clearance for Hinge door side

C1 (mm)	Door thickness (mm)			
	18	22	26	30
4	0.1	0.5	1.2	5.0
5	0.1	0.5	1.2	4.0
6	0.1	0.5	1.1	3.0
7	0.1	0.5	1.1	2.1
8	0.1	0.5	1.1	2.0

Knob Installation (Sold separately)

Recommended knob mounting position (A) for opening & (A') for closing the door.
Install one knob at (B) position is also applicable for both opening & closing.

INSTALLATION PROCEDURE

1 Cutting rails

Cut Upper rail & Lower rail to the required length.

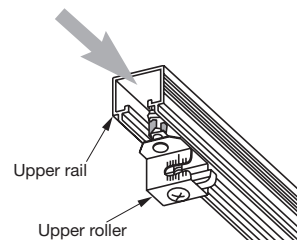
$$\text{Length} = W - 1.5$$

Caution

Remove any dirt or aluminum chips from the rail as they would cause noise during operation.

2 Installing upper rail

Insert Upper roller to Upper rail before mounting.

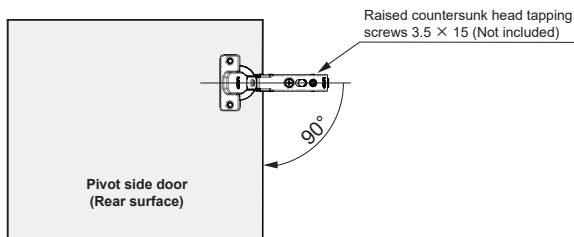


Caution

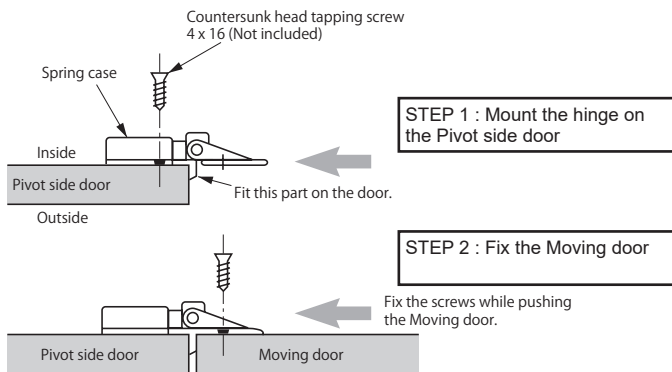
When installing the rails, ensure that upper rail and lower rail are parallel.

3 Installing concealed hinges, upper roller

Install Concealed hinge for Pivot side door.
Install the hinge of Sliding guide for moving door.



4 Installing center hinges

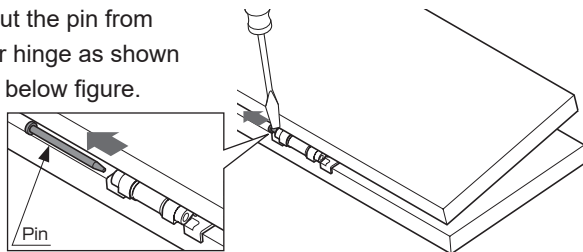


5 Installing knob

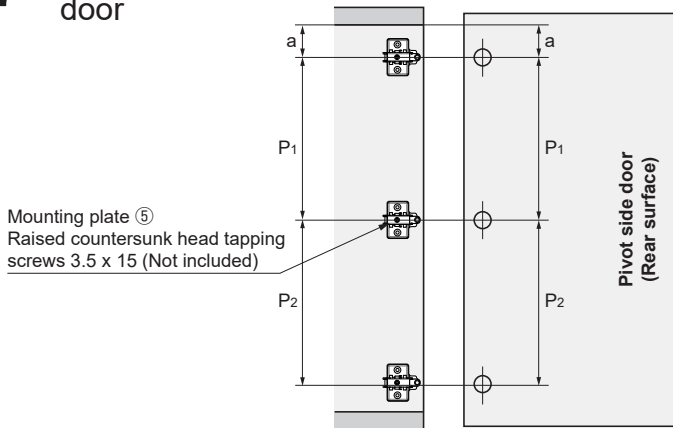
As for the position of the knob, please refer to "Door Process Dimensions" on page 2 and "How to operate the knob" on page 4.

6 Separating door panels

Pull out the pin from center hinge as shown in the below figure.



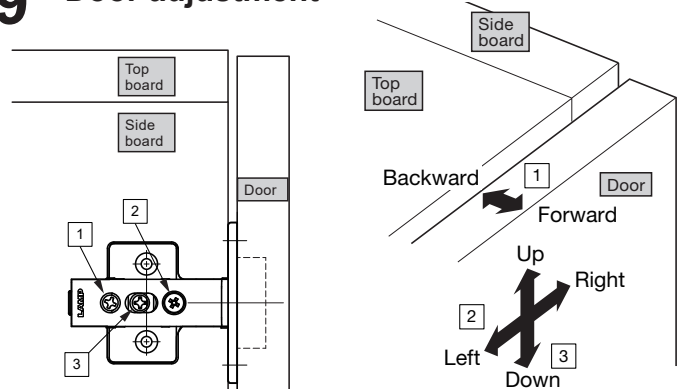
7 Fixing the mounting plates for Pivot side door



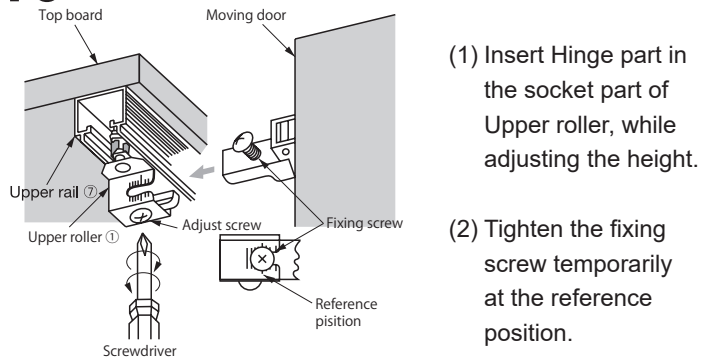
8 Hanging the doors

Put a support of suitable height under the doors, clip on the hinges on the door to the mounting plates on the cabinet.

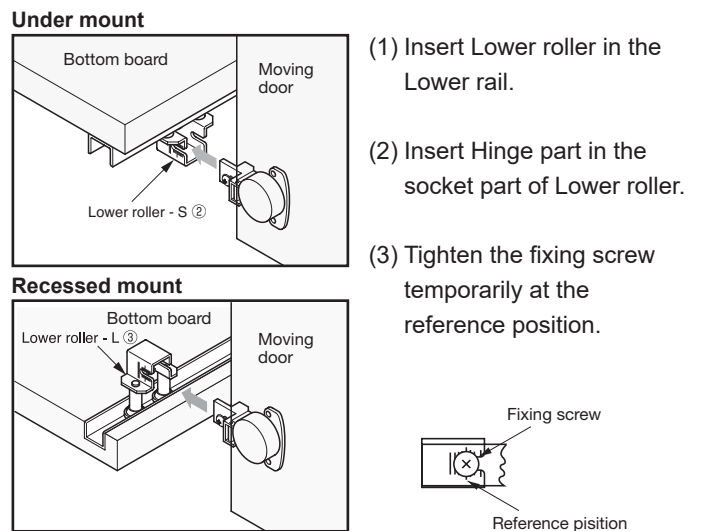
9 Door adjustment



10 Installing Upper roller

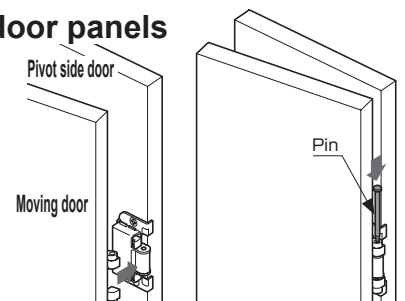


11 Installing Lower roller



12 Assembling door panels

Couple the hinge parts as shown in the right figure, then insert the hinge pin from above.



13 Checking the door movement

Open and close the door for several time and check if the door moves smoothly. Then re-tighten the fixing screws of all parts.

Caution

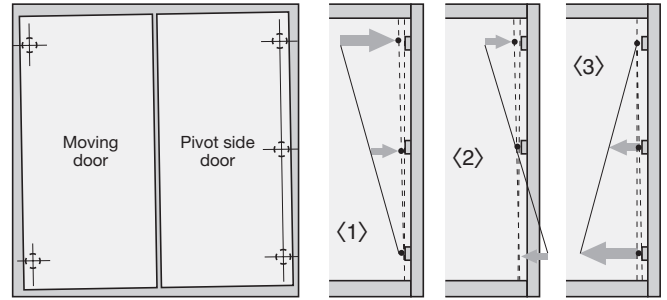
Periodically check if all of the screws are not loose. If the looseness is found, tighten it.

ADJUSTMENT OF THE INCLINED DOOR

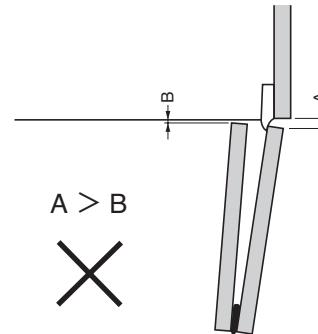
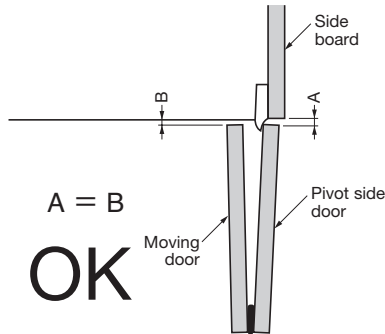
When the door is inclined a lot like the right illustration, adjust the door by the adjustment screws on the concealed hinges. Do not try to adjust it by the screws on the sliding guide.

There are three ways of adjustment as below..

- <1> Reduce the upper gap by the top and middle hinges.
- <2> Reduce the upper gap by the top hinge and increase the lower gap by the bottom hinge.
- <3> Increase the lower gap by the bottom hinge.



SUGGESTIONS FOR DOORS IN EQUAL WIDTH

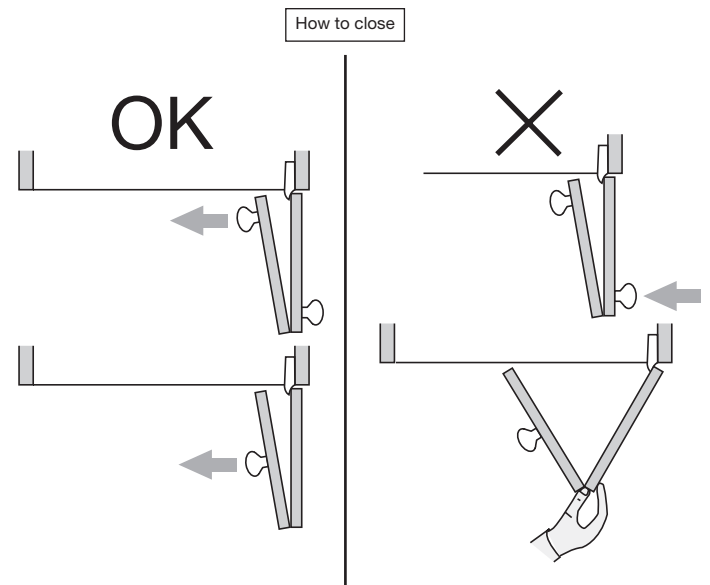
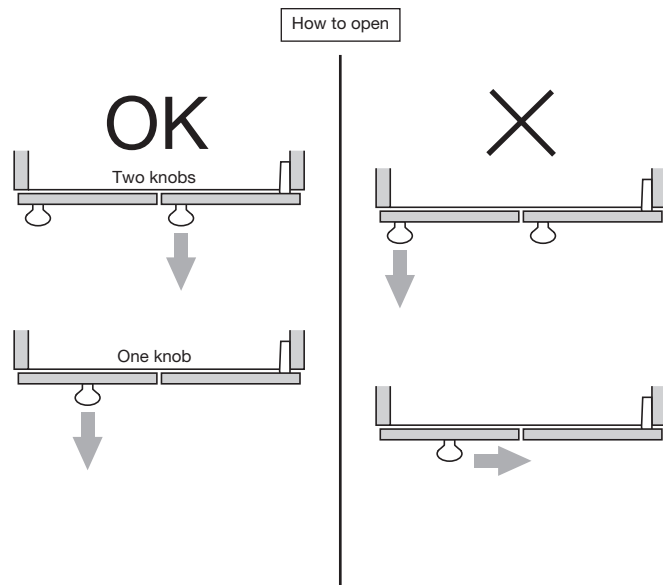


Adjust the fore-and-aft position of the concealed hinges so that the both A and B gaps are the same.

If "A" is bigger than "B", the closing action would not be smooth. Re-adjust the gaps as below.

1. Loosen all fore-and-aft-adjustment screws on the concealed hinges, and reduce the gap A, then re-tighten the screws.
2. If "A" is still bigger "B", increase the gap B by adjusting the screws on the sliding guides.

HOW TO OPERATE THE KNOB



SUGATSUNE KOGYO CO.,LTD
Tokyo, JAPAN
Phone: +81 (0)3 3866 2260 E-mail:export@sugatsune.co.jp

SUGATSUNE KOGYO (UK) LTD
Reading, UK
Phone: +44 118 9272 955 E-mail:sales@sugatsune.co.uk

SUGATSUNE EUROPE GmbH
Düsseldorf, GERMANY
Phone: +49 211 53812900 E-mail:sales@sugatsune.eu

SUGATSUNE SHANGHAI Co., LTD
Shanghai, CHINA
Phone: +86 21 3632 1858 E-mail:lamp@sugatsune.com.cn

Guangzhou, CHINA
Phone: +86 20 6639 3552 E-mail:lamp@sugatsune.com.cn

SUGATSUNE KOGYO INDIA PRIVATE LIMITED
Mumbai, INDIA
Phone: +91 22 28314490/91 E-mail:sales@sugatsune.in

SUGATSUNE AMERICA, INC
California, USA
Phone: +1 310 329 6373 E-mail:sales@sugatsune.com

Chicago, USA
Phone: +1 312 461 1081 E-mail:chicagoshowroom@sugatsune.com.

SUGATSUNE CANADA, INC.
Phone: +1 514 312 5267 E-mail:support@sugatsune.ca

ISO9001(Japan Offices and Sugatsune America) and ISO14001(Chiba Production division and Logistics center), certified.

2021.06 0805-5