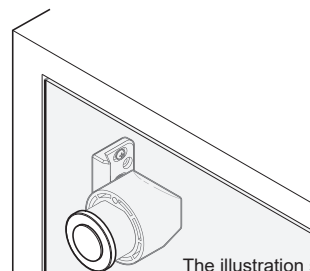


# LAMP®

# Push Knob PK04, Push Knob Latch PKL05 Installation Manual

Thank you for selecting our product. Before starting installation, please read this manual thoroughly to ensure correct installation.  
Please keep this manual at hand for future reference.



The illustration shows PKL05.

## ABOUT THE PRODUCT

- A knob (PK04) or latch (PKL05) that becomes flush with its surroundings when the knob is pushed in.
- PK04 only**
- 15-35 mm thickness without cap, 29-39 mm thickness with cap (sold separately).
- PKL05 only**
- 15-30 mm thickness without spacer, to 13 mm thickness with spacer (sold separately).
- Pushing the knob in while the door is closed will lock it. Pushing the knob again will unlock it.
- Available in both right hanging and left hanging types, and both overlay and inset doors.

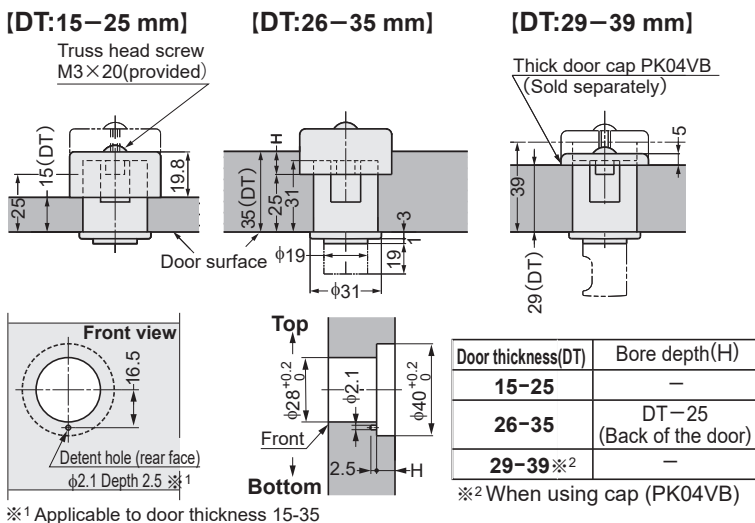
## DOOR SPECIFICATION

	Door thickness		
	Single bore	Dual bores	with optional parts
<b>PK04</b>	15-35	26-35	29-39
<b>PKL05</b>	15-30	—	13

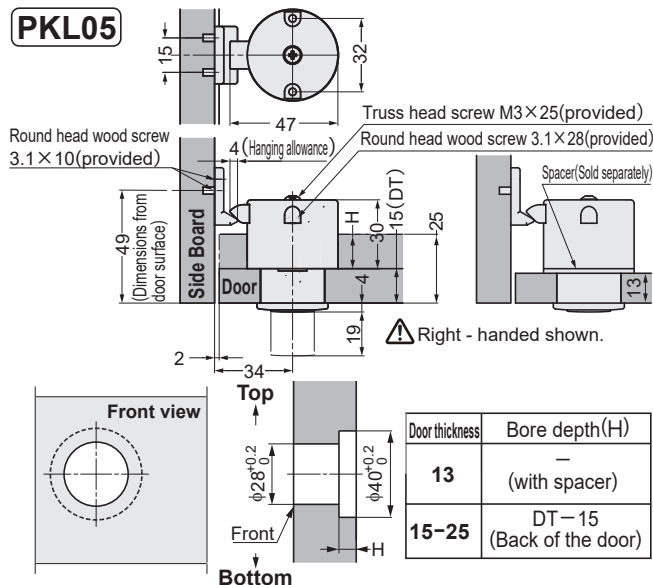
## DIMENSIONS

DT=Door thickness

### PK04

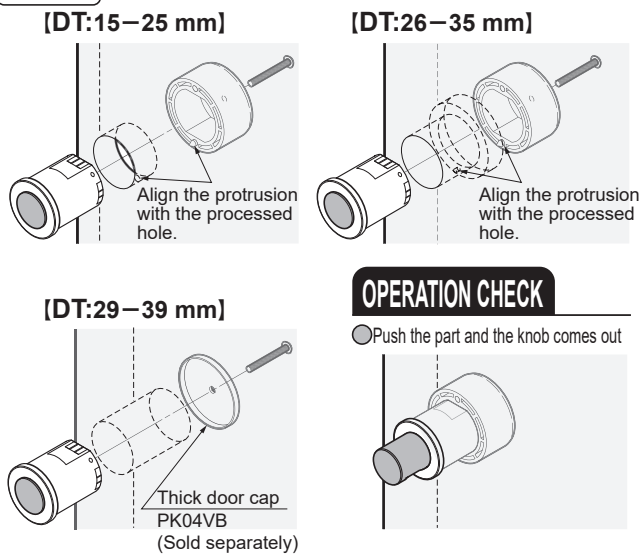


### PKL05

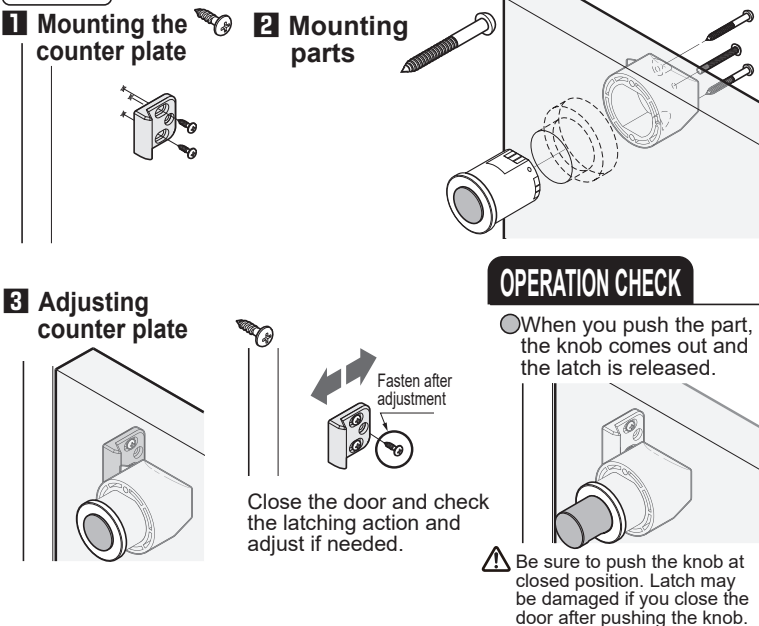


## INSTALLATION

### PK04



### PKL05



**SUGATSUNE KOGYO CO.,LTD**  
Tokyo, JAPAN

Phone: +81 (0)3 3866 2260 E-mail:export@sugatsune.co.jp

**SUGATSUNE KOGYO (UK) LTD**  
Reading, UK

Phone: +44 118 9272 955 E-mail:sales@sugatsune.co.uk

**SUGATSUNE EUROPE GmbH**  
Düsseldorf, GERMANY

Phone: +49 211 53812900 E-mail:sales@sugatsune.eu

ISO9001(Japan Offices and Sugatsune America) and ISO14001(Chiba Production division and Logistics center), certified.

**SUGATSUNE SHANGHAI Co., LTD**  
Shanghai, CHINA

Phone: +86 21 3632 1858 E-mail:lamp@sugatsune.com.cn

**Guangzhou, CHINA**

Phone: +86 20 6639 3552 E-mail:lamp@sugatsune.com.cn

**SUGATSUNE KOGYO INDIA PRIVATE LIMITED**  
Mumbai, INDIA

Phone: +91 22 28314490/91 E-mail:sales@sugatsune.in

**SUGATSUNE AMERICA, INC**  
California, USA

Phone: +1 310 329 6373 E-mail:sales@sugatsune.com

**Chicago, USA**

Phone: +1 312 461 1081 E-mail:chicagoshowroom@sugatsune.com.

**SUGATSUNE CANADA, INC.**

Phone: +1 514 312 5267 E-mail:support@sugatsune.ca